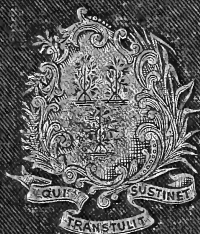


CONNECTICUT



STATE REGISTER  
AND  
MANUAL  
1893

## VOTE FOR SENATORS.

FIRST DISTRICT.	1890.			1892.		
	Brainard, Republican.	Cleveland, Democrat.	Kellogg, Prohibition.	Cooley, Republican.	Cleveland, Democrat.	Pond, Prohibition.
Hartford,.....	4,497	5,166	118	5,576	6,348	173

Labor and scattering, in 1892, 48.

Cleveland's (dem.) plurality, 772.

In 1890 Cleveland's (dem.) plurality, 669.

SECOND DISTRICT.	1890.			1892.		
	Garvan, Republican.	Dix, Democrat.	Case, Prohibition.	Holcomb, Republican.	Cooley, Democrat.	Ward, Prohibition.
Berlin,.....	235	252	14	276	308	16
East Hartford,.....	381	402	13	518	507	15
Glastonbury,.....	412	315	31	434	374	26
Manchester,.....	701	445	54	867	591	59
Marlborough,.....	38	39	4	39	60	.....
Newington,.....	89	79	7	89	107	8
Rocky Hill,.....	82	123	1	112	121	6
Southington,.....	593	521	37	694	603	37
South Windsor,.....	183	165	13	227	181	17
Wethersfield,.....	214	162	2	285	148	3
Total,.....	2,928	2,503	176	3,541	3,000	187

Labor and scattering, in 1892, 69.

Holcomb's (rep.) plurality, 541.

In 1890 Garvan's (rep.) plurality, 425.

THIRD DISTRICT.	1890.			1892.		
	Bridge, Republican.	Inslee, Democrat.	Barber, Prohibition.	Coffey, Republican.	Begg, Democrat.	Clark, Prohibition.
Bloomfield, .....	198	163	16	132	183	8
Canton, .....	273	238	11	304	268	20
East Windsor, .....	257	299	14	344	291	15
East Granby, .....	82	92	1	99	92	....
Enfield, .....	501	576	49	693	567	54
Granby, .....	186	109	10	200	126	13
Hartland, .....	73	....	2	91	54	2
Simsbury, .....	232	131	20	256	160	23
Suffield, .....	357	278	....	458	317	13
Windsor, .....	316	280	3	390	320	36
Windsor Locks, .....	178	303	7	218	332	5
Total, .....	2,593	2,469	167	3,185	2,710	189

Scattering, in 1892, 4.

Coffey's (rep.) plurality, 475.

In 1890 Budge's (rep.) plurality, 124.

FOURTH DISTRICT.	1890.			1892.		
	Gay, Republican.	Pierce, Democrat.	Abbey, Prohibition.	Gay, Republican.	Pierce, Democrat.	Clark, Prohibition.
Avon, .....	102	139	1	121	146	3
Bristol, .....	704	784	37	832	911	56
Burlington, .....	94	135	2	92	163	1
Farmington, .....	331	294	10	338	353	11
New Britain, .....	1,509	1,831	85	1,894	2,225	170
Plainville, .....	214	209	21	255	210	33
West Hartford, .....	233	99	8	286	119	18
Total, .....	3,187	3,491	164	3,818	4,127	292

Labor and scattering, in 1892, 92.

Pierce's (dem.) plurality, 309.

In 1890 Pierce's (dem.) plurality, 304.

FIFTH DISTRICT.	1890.			1892.		
	Elton, Republican.	Twitchell, Democrat.	Hard, Prohibition.	Sweeney, Republican.	Root, Democrat.	Moree, Prohibition.
Beacon Falls,.....	42	33	7	49	50	6
Bethany,.....	29	87	1	43	93	.....
Middlebury,.....	63	42	13	82	50	7
Naugatuck,.....	343	667	39	671	618	15
Oxford,.....	98	87	3	113	101	3
Prospect,.....	52	36	8	58	44	10
Waterbury,.....	2,182	2,671	31	2,768	3,732	123
Wolcott,.....	49	35	1	62	52	.....
Southbury,.....	123	118	2	125	152	4
Total,.....	2,981	3,776	105	3,971	4,892	168

Labor and scattering, in 1892, 122.

Root's (dem.) plurality, 921.

In 1890 Twitchell's (dem.) plurality, 795.

SIXTH DISTRICT.	1890.			1892.		
	Doolittle, Republican.	Hall, Democrat.	Carter, Prohibition.	Mix, Republican.	Hall, Democrat.	Countryman, Prohibition.
Cheshire,.....	217	202	13	237	207	13
Guilford,.....	237	194	45	329	285	54
Madison,.....	189	113	6	207	128	10
Meriden,.....	2,005	2,472	117	2,459	2,667	137
North Branford,.....	106	76	8	107	91	6
Wallingford,.....	455	583	17	533	692	17
Total,.....	3,259	3,640	206	3,872	4,070	237

Labor and scattering, in 1892, 274.

Hall's (dem.) plurality, 198.

In 1890 Hall's (dem.) plurality, 381.

SEVENTH DISTRICT.	1890.			1892.		
	Stiles, Republican.	Holden, Democrat.	Payne, Prohibition.	Dayton, Republican.	Holden, Democrat.	Bradley, Prohibition.
Ansonia.....	954	954	40	1,172	1,106	57
Branford.....	338	460	11	382	549	25
Derby.....	492	719	7	644	790	9
East Haven.....	110	106	7	108	117	6
Hamden.....	322	300	20	414	378	28
Milford.....	379	441	10	421	506	12
North Haven.....	230	110	35	230	157	41
Orange.....	442	392	19	504	484	41
Seymour.....	355	263	28	408	332	20
Woodbridge.....	99	64	8	111	73	8
Total.....	3,721	3,809	185	4,394	4,492	247

Labor and scattering, in 1892, 35.

Holden's (dem.) plurality, 98.

In 1890 Holden's (dem.) plurality, 88.

EIGHTH DISTRICT.	1890.			1892.		
	Hamilton, Republican.	Fox, Democrat.	Morris, Prohibition.	Barnes, Republican.	Fox, Democrat.	Shepard, Prohibition.
New Haven.....	6,497	8,261	199	7,776	10,850	217

Labor and scattering, in 1892, 48.

Fox's (dem.) plurality, 3,074.

In 1890 Fox's (dem.) plurality, 1,764.

NINTH DISTRICT.	1890.			1892.		
	Farnsworth, Republican.	Gardner, Democrat.	Babcock, Prohibition.	Ware, Republican.	Gardner, Democrat.	Randall, Prohibition.
Groton,.....	485	531	43	600	607	55
New London,.....	1,014	1,192	106	1,341	1,441	92
North Stonington,.....	207	131	4	199	148	19
Stonington,.....	514	609	103	628	733	134
Total, .....	2,220	2,463	256	2,768	2,929	300

Scattering, in 1892, 1.

Gardner's (dem.) plurality, 161.

In 1890 Gardner's (dem.) plurality, 243.

TENTH DISTRICT.	1890.			1892.		
	Cook, Republican.	Thayer, Democrat.	Mead, Prohibition.	Ayer, Republican.	Crandall, Democrat.	Crane, Prohibition.
Ledyard,.....	117	107	1	99	150	8
Norwich,.....	2,010	2,102	62	2,343	2,272	87
Preston,.....	268	299	6	287	374	11
Total, .....	2,395	2,508	69	2,729	2,796	106

Labor and scattering, in 1892, 9.

Crandall's (dem.) plurality, 67.

In 1890 Thayer's (dem.) plurality, 113.

ELEVENTH DISTRICT.	1890.			1892.		
	Noyes, Republican.	Robertson, Democrat.	Richardson, Prohibition.	Noyes, Republican.	Robertson, Democrat.	Robinson, Prohibition.
Bozrah,.....	90	104	.....	83	135	3
Colchester,.....	290	274	11	307	357	12
East Lyme,.....	217	172	21	224	204	24
Franklin,.....	67	53	5	70	67	7
Griswold,.....	253	243	8	265	267	13
Lebanon,.....	190	124	31	216	115	38
Lisbon,.....	43	57	5	52	52	10
Lyme,.....	108	80	3	133	93	.....
Montville,.....	198	311	4	225	329	7
Old Lyme,.....	136	105	2	142	139	2
Salem,.....	56	72	3	89	45	2
Sprague,.....	60	82	11	85	87	12
Voluntown,.....	102	86	.....	91	85	5
Waterford,.....	185	277	.....	204	293	.....
Total,.....	1,995	2,040	104	2,177	2,268	133

Labor and scattering, in 1892, 48.

Robertson's (dem.) plurality, 91.

In 1890 Robertson's (dem.) plurality, 45.

TWELFTH DISTRICT.	1890.			1892.		
	Mead, Republican.	Smith, Democrat.	Peebles, Prohibition.	Jones, Republican.	Smith, Democrat.	Wood, Prohibition.
Darien,.....	222	208	.....	248	226	9
Greenwich,.....	749	715	31	983	987	8
New Canaan,.....	396	228	21	334	275	19
Ridgefield,.....	272	181	.....	293	237	.....
Stamford,.....	1,352	1,371	44	1,687	1,698	34
Wilton,.....	171	169	9	206	185	12
Total,.....	3,072	2,872	105	3,751	3,608	82

Jones's (rep.) plurality, 143.

In 1890 Mead's (rep.) plurality, 200.

THIRTEENTH DISTRICT.	1890.			1892.		
	Rodgers, Republican.	Seymour, Democrat.	Weed, Prohibition.	Ferris, Republican.	Seymour, Democrat.	Bennett, Prohibition.
Fairfield,.....	302	340	12	419	450	12
Norwalk,.....	1,557	1,640	70	2,200	1,861	92
Stratford,.....	283	219	..	326	281	11
Trumbull,.....	108	153	4	150	175	8
Westport,.....	189	355	5	319	462	8
Weston,.....	98	79	4	116	83	5
<b>Total, .....</b>	<b>2,537</b>	<b>2,786</b>	<b>95</b>	<b>3,540</b>	<b>3,312</b>	<b>136</b>

Scattering, in 1892, 2.

Ferris's (rep.) plurality, 228.

In 1890 Seymour's (dem.) plurality, 249.

FOURTEENTH DISTRICT.	1890.			1892.		
	Longstaff, Republican.	Read, Democrat.	Strong, Prohibition.	Brothwell, Republican.	Morgan, Democrat.	Strong, Prohibition.
Bridgeport,.....	3,383	4,439	78	4,637	6,392	80

Scattering, in 1892, 6.

Morgan's (dem.) plurality, 1,755.

In 1890 Read's (dem.) plurality, 1,056.



FIFTEENTH DISTRICT.	1890.			1892.		
	Ambler, Republican.	Houlihan, Democrat.	Beard, Prohibition.	Crofut, Republican.	Houlihan, Democrat.	Shepard, Prohibition.
Bethel, .....	459	227	5	448	338	19
Brookfield, .....	92	126	2	118	109	3
Danbury, .....	1,679	1,756	108	2,025	2,509	84
Easton, .....	123	109	4	125	125	.....
Huntington, .....	402	269	34	511	425	24
Monroe, .....	100	132	5	121	131	3
New Fairfield, .....	85	80	3	81	86	6
Newtown, .....	185	616	3	206	658	3
Redding, .....	175	119	2	182	137	10
Sherman, .....	111	60	6	109	56	5
Total, .....	3,414	3,494	172	3,925	4,574	157

Labor and scattering, in 1892, 50.

Houlihan's (dem.) plurality, 648.

In 1890 Houlihan's (dem.) plurality, 80.

SIXTEENTH DISTRICT.	1890.			1892.		
	Shumway, Republican.	Bowen, Democrat.	Law, Prohibition.	Matthewson, Republican.	Bowen, Democrat.	Law, Prohibition.
Ashford, .....	59	153	4	91	130	3
Eastford, .....	54	88	6	67	89	.....
Killingly, .....	530	338	32	595	491	27
Putnam, .....	483	336	13	521	437	1
Thompson, .....	271	190	6	322	292	15
Woodstock, .....	210	192	11	284	196	15
Total, .....	1,667	1,327	72	1,890	1,635	61

Scattering, in 1892, 5.

Matthewson's (rep.) plurality, 255.

In 1890 Shumway's (rep.) plurality, 280.

SEVENTEENTH DISTRICT.	1890.			1892.	
	Palmer, Republican.	Burlingame, Democrat.	Lewis, Prohibition.	Milner, Republican.	Williams, Democrat and Prohibition.
Brooklyn, .....	140	162	18	177	164
Canterbury, .....	81	138	16	111	155
Chaplin, .....	57	64	4	71	53
Hampton, .....	82	73	5	86	68
Painfield, .....	380	295	5	451	317
Pomfret, .....	126	62	11	142	123
Scotland, .....	80	41	5	74	51
Sterling, .....	117	100	6	157	97
Windham, .....	73	748	87	869	955
Total, .....	1,795	1,682	157	2,138	1,982

Scattering, in 1892, 1.

Milner's (rep.) plurality, 156.

In 1890 Palmer's (rep.) plurality, 112.

EIGHTEENTH DISTRICT.	1890.			1892.		
	Dains, Republican.	Alldis, Democrat.	Manchester, Prohibition.	Brooker, Republican.	Wadhams, Democrat.	Barber, Prohibition.
Barkhamsted, .....	125	116	.....	149	111	5
Colebrook, .....	88	100	4	97	105	4
Goshen, .....	78	91	5	78	113	8
Harwinton, .....	102	77	12	129	90	21
New Hartford, .....	245	217	14	222	233	15
Norfolk, .....	141	126	11	155	150	13
Torrington, .....	641	494	21	900	516	42
Winchester, .....	609	613	39	749	667	68
Total, .....	2,029	1,834	106	2,539	1,985	176

Scattering, in 1892, 1.

Brooker's (rep.) plurality, 554.

In 1890 Dain's (rep.) plurality, 196.

NINETEENTH DISTRICT.	1890.			1892.		
	Spurr, Republican.	Ensign, Democrat.	Hart, Prohibition.	Bierce, Republican.	Ensign, Democrat.	Kelsey, Prohibition.
Bridgewater,.....	41	97	2	36	122	2
Canaan,.....	131	99	..	111	139	14
Cornwall,.....	127	131	19	137	174	14
Kent,.....	151	125	11	152	152	16
New Milford,.....	391	521	6	473	601	4
North Canaan,.....	169	168	2	185	230	2
Salisbury,.....	326	330	1	325	424	.....
Sharon,.....	209	261	2	215	308	3
Roxbury,.....	110	113	3	93	119	3
Total,.....	1,655	1,845	46	1,717	2,269	63

Ensign's (dem.) plurality, 552.

In 1890 Ensign's (dem.) plurality, 190.

TWENTIETH DISTRICT.	1890.			1892.		
	Benton, Republican.	Lyman, Democrat.	Grannis, Prohibition.	Perkins, Republican.	Lyman, Democrat.	Ganung, Prohibition.
Bethlehem,.....	86	61	4	89	65	4
Litchfield,.....	244	351	17	328	380	26
Morris,.....	50	92	1	63	83	3
Plymouth,.....	183	200	49	255	222	41
Thomaston,.....	315	297	26	363	327	34
Warren,.....	42	78	..	53	72	4
Washington,.....	151	219	13	180	216	14
Watertown,.....	230	193	25	253	226	19
Woodbury,.....	180	174	28	220	171	31
Total,.....	1,451	1,665	163	1,814	1,762	176

Scattering, in 1892, 11.

Perkins's (rep.) plurality, 52.

In 1890 Lyman's (dem.) plurality, 184.

TWENTY-FIRST DISTRICT.	1890.			1892.		
	Clark, Republican.	Gelston, Democrat.	Barton, Prohibition.	Gross, Republican.	Chalker, Democrat.	Fordham, Prohibition.
Chatham, .....	161	241	34	193	239	35
Chester, .....	163	84	24	193	103	25
Clinton, .....	170	109	12	204	137	12
Durham, .....	109	95	13	106	117	11
East Haddam, .....	218	213	12	334	213	18
Essex, .....	273	238	27	313	258	30
Haddam, .....	259	190	6	247	223	9
Killingworth, .....	47	76	.....	71	75	.....
Old Saybrook, .....	146	101	2	158	121	.....
Saybrook, .....	183	85	16	236	109	16
Westbrook, .....	110	60	18	127	68	11
Total, .....	1,839	1,492	164	2,182	1,663	167

Scattering, in 1892, 6.

Gross's (rep.) plurality, 519.

In 1890 Clark's (rep.) plurality, 347.

TWENTY-SECOND DISTRICT.	1890.			1892.		
	Chapman, Republican.	Butler, Democrat.	Boardman, Prohibition.	Chapman, Republican.	Davis, Democrat.	Coe, Prohibition.
Cromwell, .....	177	192	4	224	201	18
Middlefield, .....	93	68	18	101	76	17
Middletown, .....	985	1,315	60	1,391	1,439	60
Portland, .....	426	228	10	438	355	29
Total, .....	1,681	1,803	92	2,154	2,071	124

Scattering, in 1892, 7.

Chapman's (rep.) plurality, 83.

In 1890 Butler's (dem.) plurality, 122.

TWENTY-THIRD DISTRICT.	1890.			1892.		
	Sprague, Republican.	Foster, Democrat.	Martin, Prohibition.	Phelps, Republican.	Foster, Democrat.	Hale, Prohibition.
Andover, .....	49	48	5	66	40	2
Bolton, .....	43	64	9	48	73	8
Columbia, .....	85	83	6	90	80	6
Coventry, .....	175	193	19	219	228	15
Hebron, .....	127	88	6	139	91	.....
Vernon, .....	678	824	35	851	847	43
Total, .....	1,157	1,300	80	1,413	1,359	74

Labor and scattering, in 1892, 47.

Phelps's (rep.) plurality, 51.

In 1890 Foster's (dem.) plurality, 143.

TWENTY-FOURTH DISTRICT.	1890.			1892.		
	Keeney, Republican.	Pinney, Democrat.	Hanks, Prohibition.	Keeney, Republican.	Pinney, Democrat.	Brooks, Prohibition.
Ellington, .....	104	174	11	161	175	.....
Mansfield, .....	201	131	20	204	191	27
Somers, .....	184	87	4	187	113	5
Stafford, .....	308	449	28	420	475	18
Tolland, .....	111	130	10	106	153	6
Union, .....	44	46	6	48	58	4
Willington, .....	105	77	6	116	75	5
Total, .....	1,057	1,094	85	1,242	1,240	65

Labor and scattering, in 1892, 11.

Keeney's (rep.) plurality, 2.

In 1890 Pinney's (dem.) plurality, 37.